



SAILING INSTRUCTIONS

**The International Etchells 2018-2019
Victorian Championship**

9th to 11th March 2019

To be conducted by

**Royal Geelong Yacht Club
Geelong, Victoria**

In conjunction with the Geelong Etchells Fleet

1. RULES

- 1.1 The Regatta will be governed by the 'rules' as defined in The Racing Rules of Sailing (RRS) and Australian Sailing Special Regulations Part 1 Category 7 plus VHF radio.
- 1.2 A boat's compliance with the Australian Sailing Special Regulations may be checked at any time by the Organising Authority after registration including whilst on the water and before and after racing. Compliance failures will be referred to the Protest Committee. Discretionary penalties may apply.
- 1.3 The Championship is classified as a Class C event and is sanctioned by the International Etchells Class Association.

2. NOTICES TO COMPETITORS

Notices to competitors will be posted on the Official Notice Board located next to the RGYC Slipway & Mast crane.

3. CHANGES TO SAILING INSTRUCTIONS

Any change to the sailing instructions will be posted before 0900 hours on the day it will take effect, except that any change to the schedule of races will be posted by 2000 hours on the day before it will take effect.

4. SIGNALS MADE ASHORE

- 4.1 Signals made ashore will be displayed at the flag mast located on the western boundary of the club.
- 4.2 When flag AP is displayed ashore, '1 minute' is replaced with 'not less than 60 minutes' in race signal AP.

5. REGISTRATION

- 5.1 Registration formalities as detailed in the Notice of Race are required to be completed by 1000 hours on Saturday 9th March 2019.
- 5.2 All boats will be issued with bow numbers at registration. Bow numbers are to be attached to the forward part of each side of each boat, with the after part of the bow number to be no more than 600mm (instructions in welcome bag) from the hull datum point as defined in class rule D.2.4 (a) and the top of the bow number to be no more than 20 mm below the gunwale. No numbers may wrap around the stem or the gunwale.

6 SCHEDULES

6.1 Regatta Schedule

Day & Date	Activity	Time
Friday, 8th March, 2019	Registration and Weigh In	16:00-18:30 Hrs
Saturday, 9th March, 2019	Registration and Weigh In	08:30-10:00 Hrs
Saturday, 9th March, 2019	Competitor Information session	10:30 Hrs
Monday, 11th March, 2019	Presentation Ceremony	After Racing

6.2 Racing Schedule

Day & Date	Number of Races	First Warning Signal
Saturday, 9th March, 2019	2	12:55 hrs
Sunday, 10th March, 2019	2	12:55 hrs
Monday, 11th March, 2019	2	10:55 hrs

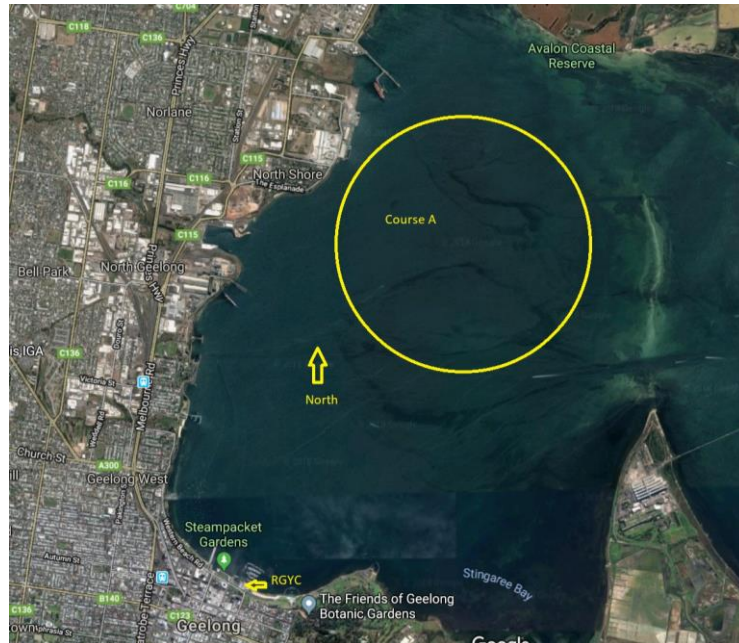
6.3 No Warning Signal will be made after 15:00 hrs on the last scheduled day of racing.

7. CLASS FLAG

The class flag will be the Etchells Class insignia on a white background.

8. RACING AREA

Racing will take place on the waters of Corio Bay per “Course A” below.

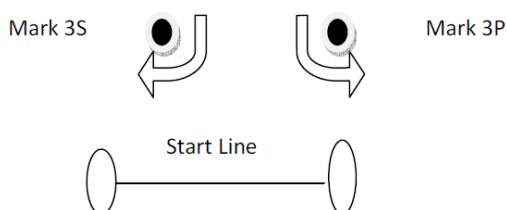
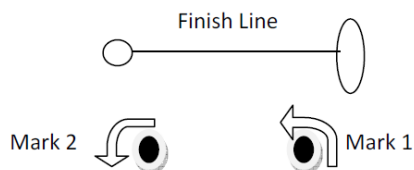


9. THE COURSES

9.1 The diagrams below show the course configuration, including the order in which marks are to be passed, and the side on which each mark is to be left.

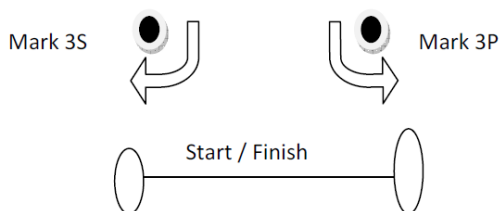
Course 1 – Numeral Pennant 1

Start- 1-2-3(P/S)-1-2-3(P/S)-Finish



Course 2- Numeral Pennant 2

Start-1-2-3(S/P)-1-2-Finish



9.2 The course to be sailed will be designated by displaying Numeral Pennant 1 or 2 from the race committee vessel no later than the warning signal.

9.3 The race committee vessel may display the approximate compass bearing from the Starting Line to Mark 1.

10. MARKS

Marks are described as follows:

Mark	Shape	Colour
Mark 1	Cylinder	Green
Mark 2	Truncated Cone	Orange
Marks 3S & 3P	Cylinder	Green
Change Mark 1	Truncated Cone	Yellow with Black Band
Change Marks 3S & 3P	Truncated Cone	Yellow with Black Band
Start Marks	Race Committee Vessels	Orange Flags
Alternate Start Mark	Truncated Cone	Orange
Finish Marks	Race Committee Vessels	Blue Flags
Alternate Finish Mark	Truncated Cone	Orange

11. THE START

11.1 The Starting Line will be between the staffs displaying an orange flag on the race committee vessels at each end of the starting line or between the staff displaying an orange flag on the race committee vessel at the starboard end of the starting line and an orange buoy at the port end.

11.2 A boat starting later than 10 minutes after the starting signal will be scored DNS without a hearing. This changes RRS 63.1, A4 and A.5.

11.3 The Race Committee will attempt to notify OCS, UFD and BFD boats by bow number or sail number by radio on VHF Channel 71 approximately one minute after the starting signal. Failure of equipment, failure to hear a hail, delay in hailing or the order in which hails are given will not be grounds for redress. This changes RRS 62.1.

12. CHANGE OF THE NEXT LEG OF THE COURSE

To change the next leg of the course, the Race Committee will move the original mark (or the finishing line) to a new position. The change will be signalled before the leading boat has begun the leg, although the mark (or finishing line) may not yet be in the new position. Any mark to be rounded after rounding the moved mark may be relocated without further signalling to maintain the course configuration. This changes RRS 33.

13. THE FINISH

The finishing line will be between staffs displaying a blue flag on the race committee vessels at each end of the line or between the staff displaying a blue flag on a race committee vessel and an orange buoy.

14. PENALTY SYSTEM

14.1 The penalty for breaking a rule of Part 2 shall be a One-Turn Penalty (one tack and one gybe in the same direction) except that for infringements occurring within the Zone as defined in the RRS the penalty shall be a Two-Turns Penalty (two tacks and two gybes in the same direction). This changes RRS 44.1.

14.2 A boat that has taken a penalty or retired under RRS 44.1 shall complete an acknowledgement form at the registration desk within the protest time limit.

15. TIME LIMITS

15.1 The time limit for Course 1 will be 4 hours from the starting signal or for Course 2 it will be 3 hours from the starting signal.

15.2 If no boat has passed the first windward mark one hour after the starting signal, the race shall be abandoned.

15.3 Boats failing to finish within 30 minutes after the first boat sails the course and finishes will be scored Did Not Finish without a hearing. This changes RRS 35, A4 and A.5.

16. PROTESTS AND REQUESTS FOR REDRESS

- 16.1 (a) Protest forms are available at the RGYC registration desk.
(b) Protests and requests for redress or reopening shall be delivered there within the appropriate time limit.
(c) The protest time limit is 60 minutes after the last boat has finished the last race of the day or the race committee signals no more racing today, whichever is later.
- 16.2 Notices will be posted within 30 minutes of the protest time limit to inform competitors of hearings in which they are parties or named as witnesses. Hearings will be held at the club.
- 16.3 Notices of protests by the Race Committee will be posted within the protest time limit on the Official Notice Board to inform boats under RRS 61.1(b).
- 16.4 Prior to a hearing and with the permission of the Protest Committee, a boat that has broken a rule of Part 2 of the RRS and has not complied with the requirements of RRS 31 or 44.1, may accept a 40% place penalty, calculated on the number of boats entered rounded to the nearest whole number (rounding 0.5 upwards), except that she shall not be scored worse than DNF.
- 16.5 For infringements of the rules other than Part 2, the Protest Committee may award a lesser penalty than DSQ.
- 16.6 For the purpose of RRS 64.3(b) the 'authority responsible' is the Class Governing Committee.
- 16.7 Breaches of instructions 5.2, 14.2, 18, 19, 23, 24 and 25 will not be grounds for protest by a boat. This changes RRS 60.1(a). Penalties for these breaches may be less than disqualification if the Protest Committee so decides.
- 16.8 On the last day of the regatta:
- (a) a request for reopening a hearing shall be delivered within the protest time limit if the party requesting reopening was informed of the decision on the previous day;
 - (b) a request for reopening a hearing held on the last day shall be delivered no later than 30 minutes after the party requesting reopening was informed of the decision on that day;
 - (c) the time limit to request redress based upon an action or omission of the Race Committee or Protest Committee shall be 30 minutes after the final results are posted. This changes RRS 62 and 66.

17. SCORING

- 17.1 Three (3) races are required to constitute a series.
- 17.2 When three (3) races have been completed, a boat's series score will be the total of her race scores.
- 17.3 When four (4) or more races have been completed, a boat's series score will be the total of her race scores excluding her worst score.

18. SAFETY REGULATIONS

A boat that retires from a race shall notify the Race Committee as soon as possible.

19. REPLACEMENT OF CREW OR EQUIPMENT

- 19.1 Substitution of crew will not be allowed without the prior written approval of the Race Committee.
- 19.2 After measurement until completion of racing, no boat, sail or any item of measured equipment shall leave the venue without being posted on the Official Equipment Sign-out

Sheet on the Official Notice Board. It is the sole responsibility of each skipper to ensure proper recording.

- 19.3 After measurement until completion of racing, no sail shall be re-cut or altered. Repairs to sails pursuant to all applicable rules are permissible only upon written approval of the Race Committee. All such sails may be subject to re-measurement on completion of repairs.

20. EQUIPMENT AND MEASUREMENT CHECKS

- 20.1 A boat or equipment may be inspected at any time for compliance with the class rules and sailing instructions which may include RRS 43 and Class Rules C.2.2 and C.3.2.
- 20.2 On the water, a boat can be instructed by the Race Committee to proceed immediately to a designated area for inspection.

21. CREW WEIGHING

- 21.1 The weights and total combined crew weight of each crew including skipper shall be determined prior to racing and the total combined weight of crew members for each boat will be posted on the Official Notice Board.
- 21.2 Crews shall be weighed wearing light clothing, the minimum being outerwear shorts and t-shirt.
- 21.3 Crew substitutions shall not be permitted for the purpose of making the weight limit.
- 21.4 Weighing scales will be available on each race day in the Race Office from 1000 to 1700hrs.

22. OFFICIAL BOATS

Official boats may display the RGYC Burgee.

23. COACH AND SUPPORT BOATS

- 23.1 Coach and support boats must be registered with the Organising Authority prior to acting as a coach or support boat and shall be marked with identifying numbers issued by the Organising Authority. Boats shall display identifying numbers at all times while they are acting as a coach or support boat.
- 23.2 All registered coach and support boats will carry on board and operate while on the water a VHF radio capable of transmitting and receiving on VHF Channels 16, 71 and 74 and agree to assist the Race Committee if directed to do so.
- 23.3 Competitors shall have no communication with, and boats shall not be tied to, coach or support boats from the first Warning Signal (or any other time the Organising Authority considers appropriate) of the day until racing has been concluded for the day. Between races, coach and support boats shall not approach, communicate with or transfer provisions or equipment to or from their supported boats unless in a medical or emergency requirement threatening the health of the crew or the flotation of the boat and only with the expressed permission of the Race Committee.
- 23.4 Registered coach and support boats and their personnel shall stay at least 100 metres below the starting line from the time of the Preparatory Signal until five minutes after the start of any race. After this time, coach and support boats may then proceed parallel to the course on the starboard side of the course facing the wind at a distance of at least 100 metres outside areas where boats are racing. Coach and support boats shall not go above the weather marks or the Course 1 finishing line or below the leeward marks or the Course 2 finishing line at any other time while boats are racing.
- 23.5 Any breach of SI 23.1, 23.2, 23.3 or 23.4 by a coach or support boat may result in a penalty being applied to any or all boats serviced by that coach or support boat. The penalty may be disqualification or some other penalty as determined by the Protest Committee.

- 23.6 Coach and support boats shall, when requested by the Race Committee, tow or assist boats not associated with them. Coach and support boats will monitor VHF channel 71 and shall follow all instructions from the Race Committee.

24. HAUL-OUT RESTRICTIONS

All boats shall be afloat before 1200 hours on Saturday 9th March and shall not be hauled out during the regatta except with and according to the terms of prior written permission of the Race Committee. The penalty may be DSQ for any subsequent races.

25. PLASTIC POOLS

Plastic pools or their equivalent shall not be used around competing yachts between the close of registration and the end of the regatta.

26. RADIO COMMUNICATION

- 26.1 All boats shall carry a marine band VHF receiver capable of transmitting and receiving channels 16, 69, 71, 72, 73, & 77. Boats shall use the radio to report retirement from racing and may use the radio to request assistance in an emergency. No other transmissions are permitted by competing yachts during each racing day from the first Warning Signal until the end of the last race of the day.
- 26.2 The Race Committee may use the radio to advise competitors of race information.
- 26.3 The use of mobile/cell phones or any device capable of sending and/or receiving external electronic communication and/or connecting to the internet is prohibited after the first Warning Signal (or any other time considered appropriate by the Organising Authority) on each race day until the boat has completed its days racing, except as provided in clause 26.1 or in an emergency threatening the safety of any member of the crew or the flotation of the boat and only with the express permission of the Protest Committee or the Race Committee.

27. PRIZES

As detailed in the Notice of Race.

28. DISCLAIMER OF LIABILITY

- 28.1 Competitors participate in the regatta entirely at their own risk. It is the competitor's decision to enter the Championship or to start or continue in any race. Competitors' attention is drawn to RRS Fundamental Rule 4 which states: "The responsibility for a boat's decision to participate in a race or to continue racing is hers alone."
- 28.2 The Organizing Authority is not responsible for the seaworthiness of a boat whose entry is accepted or the sufficiency or adequacy of its equipment. The Organizing Authority will not accept any liability for material damage or personal injury or death sustained in conjunction with or prior to, during, or after the regatta.

29. INSURANCE

Each participating boat shall be insured with valid third-party liability insurance with a minimum cover of \$10,000,000 per incident or the equivalent.