

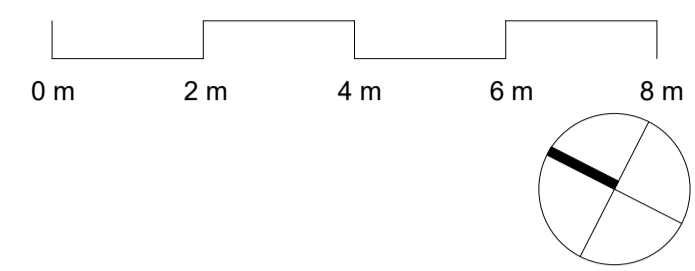
GENERAL NOTES
DO NOT SCALE FROM THIS DRAWING

CONFIRM ALL DIMENSIONS AND SETOUTS ON SITE PRIOR TO MANUFACTURE & INSTALLATION

ALL WORK IN ACCORDANCE WITH RELEVANT AUSTRALIAN STANDARDS

TO BE READ IN CONJUNCTION WITH ENGINEERS DOCUMENTS.

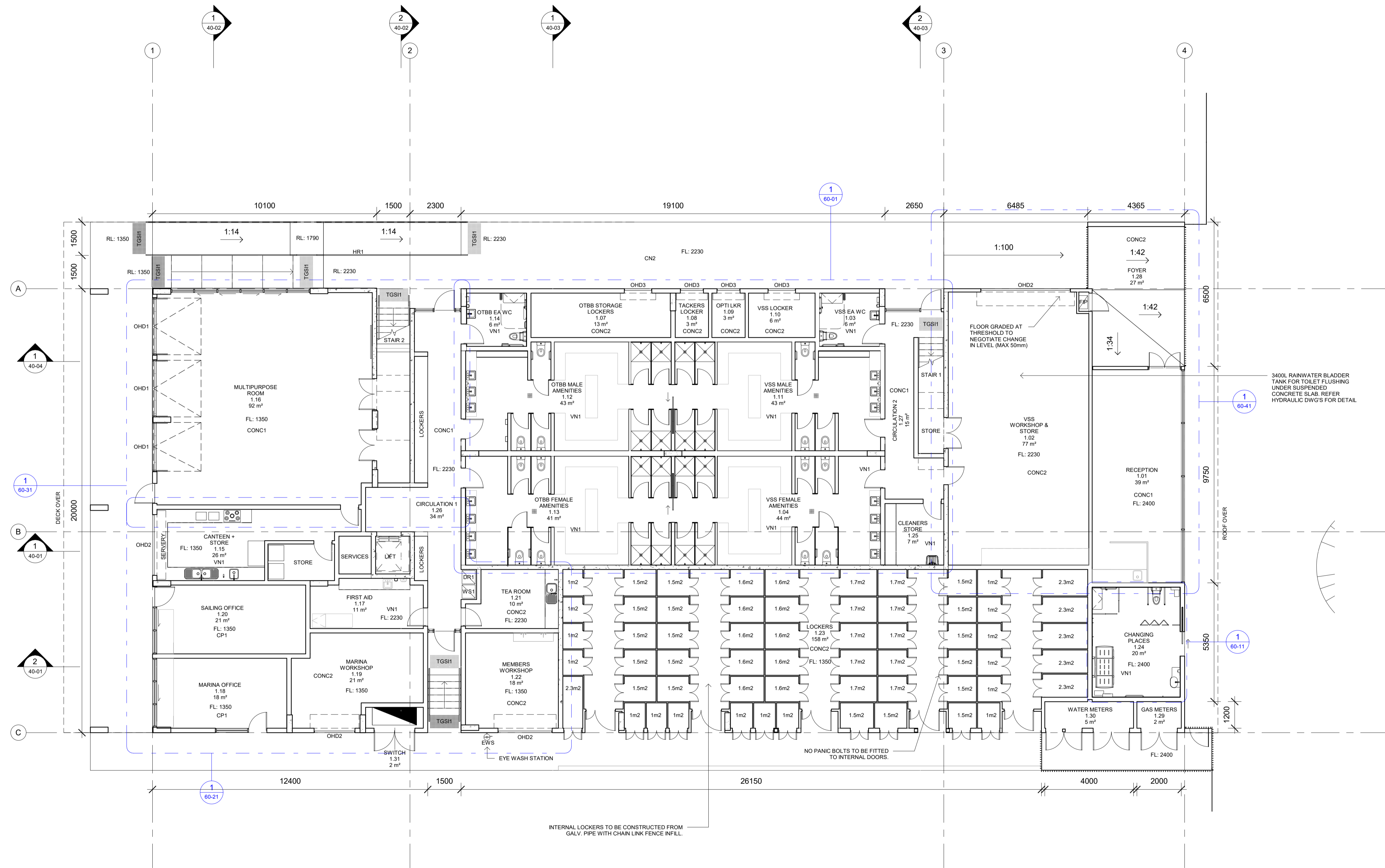
LEGEND



LEGEND

Refer to SCH-01 and SCH-02 for full descriptions and specification of all elements.

CODE	DESCRIPTION
CN2	Concrete paving
CONC1	Concrete floor, coloured - R10 Slip resistance
CONC2	Concrete floor, coloured - R10 Slip resistance
CP1	Carpet Tiles, colour 1
DR1	Clothes Dryer, client supplied
EWS	Eye Wash Station, plumbed to mains
HR1	Galvanised Iron Handrail
OHD1	Sectional overhead garage door, glazed
OHD2	Roller shutter, Manually operated, Deep Ocean
OHD3	Mini Roller shutter, Manually operated, Deep Ocean
TGSII	Tackle ground surface indicators
VN1	Vinyl floor, colour 1
WS1	Washing machine, client supplied



3400L RAINWATER BLADDER TANK FOR TOILET FLUSHING UNDER SUSPENDED CONCRETE SLAB. REFER HYDRAULIC DWG'S FOR DETAIL.

NO PANIC BOLTS TO BE FITTED TO INTERNAL DOORS.

INTERNAL LOCKERS TO BE CONSTRUCTED FROM GALV PIPE WITH CHAIN LINK FENCE INFL.

1 GROUND FLOOR PLAN
40-01 1:100

Rev	Date	Description
H	21/07/2021	DRAFT FOR REVIEW
G	16/07/2021	DRAFT FOR REVIEW
F	02/07/2021	DRAFT FOR COORDINATION
E	22/06/2021	DRAFT FOR REVIEW
D	11/06/2021	DRAFT 70% TENDER DOCS

sydney Level 2, 79 Myrtle St
Chippendale 2008
Nominated Architect: Gerard Reinmuth 6629
T 02 9698 2198
F 02 9698 2353

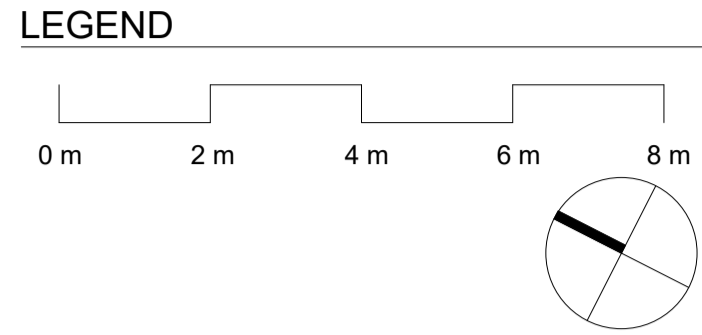
hobart 181 Elizabeth St
Hobart 7000
Nominated Architect: Scott Balmforth 564
T 03 6234 6372
F 03 6231 4839

TERROIR

Project:
**ROYAL GEELONG YACHT CLUB
GEELONG WATERFRONT SAFE
HARBOUR PRECINCT - STAGE 1**

Drawing Description:
GROUND FLOOR PLAN STAGE 1

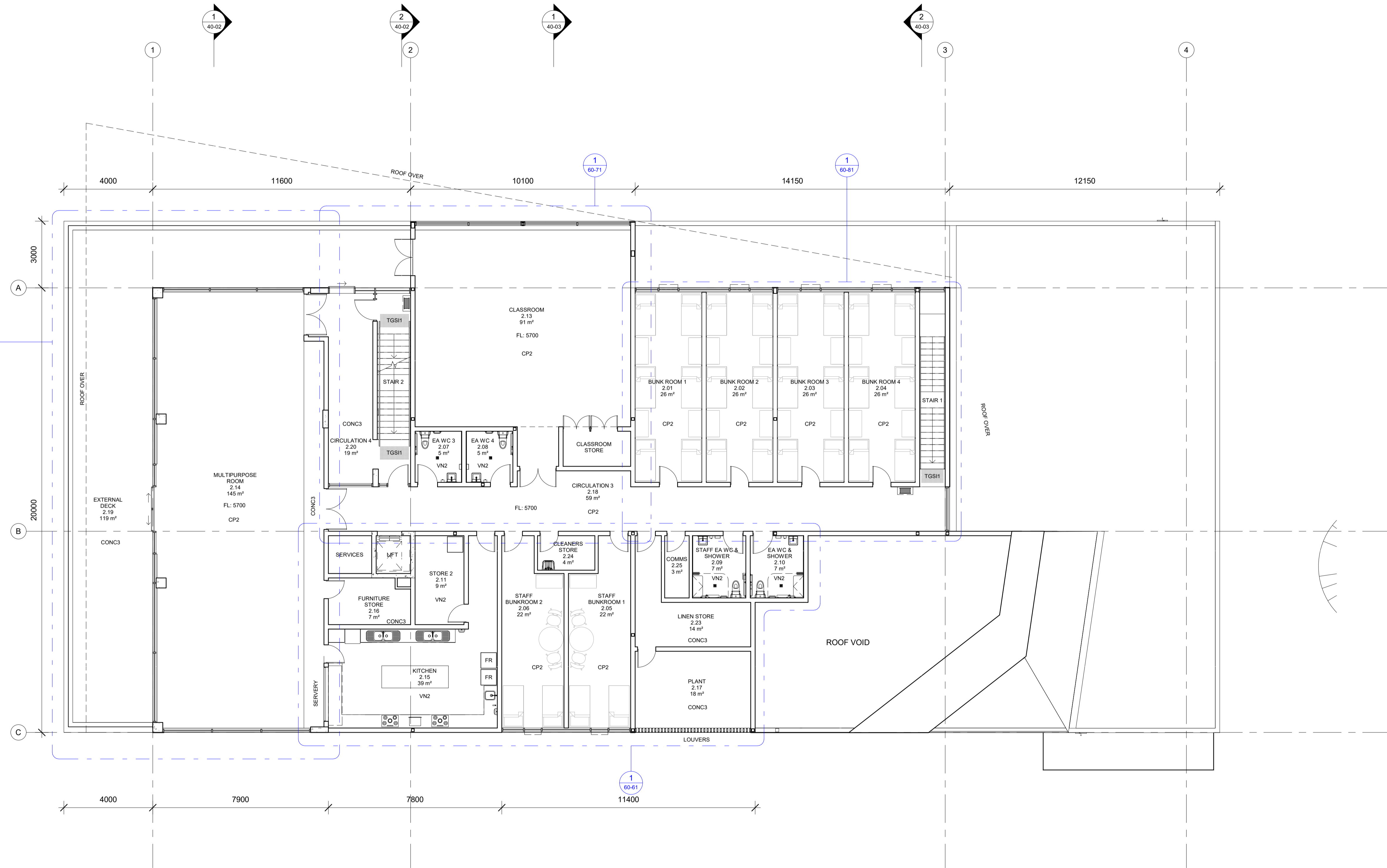
GENERAL NOTES
 DO NOT SCALE FROM THIS DRAWING
 CONFIRM ALL DIMENSIONS AND SETOUTS ON SITE PRIOR TO MANUFACTURE & INSTALLATION
 ALL WORK IN ACCORDANCE WITH RELEVANT AUSTRALIAN STANDARDS
 TO BE READ IN CONJUNCTION WITH ENGINEERS DOCUMENTS.



LEGEND

Refer to SCH-01 and SCH-02 for full descriptions and specification of all elements.

CODE	DESCRIPTION
CONC3	Concrete floor, natural - R10 Slip resistance
CP2	Carpet Tiles, colour 2
FR	Fridge/Freezer, Client Supplied
TGS11	Tactile ground surface indicators
VN2	Vinyl floor, colour 2



Rev	Date	Description
H	21/07/2021	DRAFT FOR REVIEW
G	16/07/2021	DRAFT FOR REVIEW
F	02/07/2021	DRAFT FOR COORDINATION
E	22/06/2021	DRAFT FOR REVIEW
D	11/06/2021	DRAFT 70% TENDER DOCS

sydney Level 2, 79 Myrtle St
 Chippendale 2008
 Nominated Architect: Gerard Reinmuth 6629
 T 02 9698 2198
 F 02 9698 2353

hobart 181 Elizabeth St
 Hobart 7000
 Nominated Architect: Scott Balmforth 564
 T 03 6234 6372
 F 03 6231 4839

TERROIR

Project:
**ROYAL GEELONG YACHT CLUB
 GEELONG WATERFRONT SAFE
 HARBOUR PRECINCT - STAGE 1**

Drawing Description:
LEVEL 1 FLOOR PLAN STAGE 1

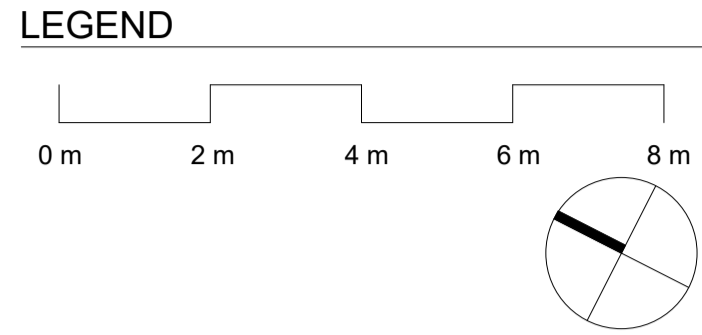
Drawn by: JA Checked by: SB Scale: 1 : 100@A1

PROJECT NO:	DWG NO:	REV NO:
18330	TD-11-02	H

Drawing Status: TENDER DOCUMENTATION

1 LEVEL 1 FLOOR PLAN
 40-01 1:100

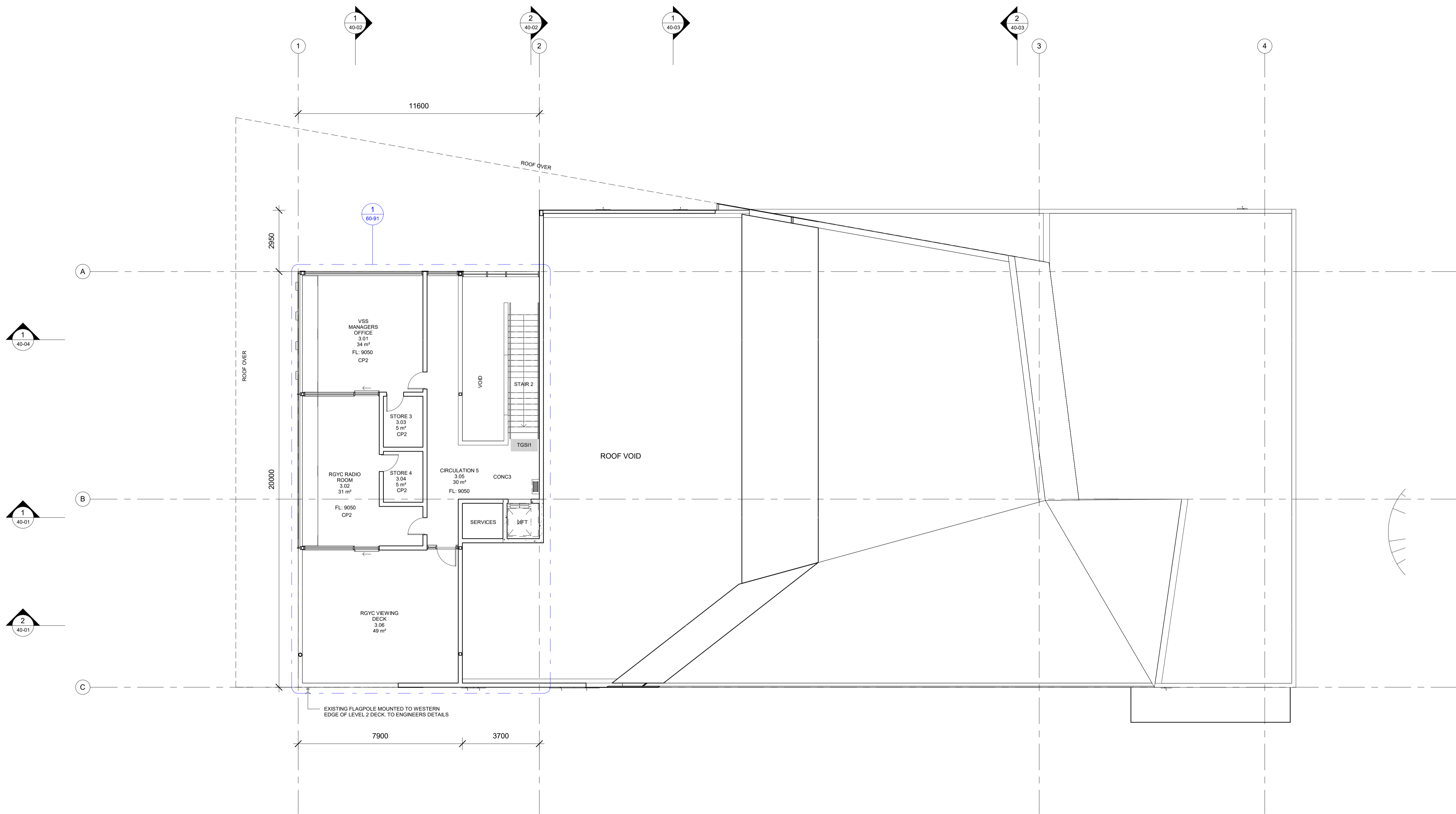
GENERAL NOTES
 DO NOT SCALE FROM THIS DRAWING
 CONFIRM ALL DIMENSIONS AND SETOUTS ON SITE PRIOR TO MANUFACTURE & INSTALLATION
 ALL WORK IN ACCORDANCE WITH RELEVANT AUSTRALIAN STANDARDS
 TO BE READ IN CONJUNCTION WITH ENGINEERS DOCUMENTS.



LEGEND

Refer to SCH-01 and SCH-02 for full descriptions and specification of all elements.

CODE	DESCRIPTION
CONC3	Concrete floor, natural - R10 Slip resistance
CP2	Carpet Tiles, colour 2
TGS11	Tactile ground surface indicators



Rev	Date	Description
H	21/07/2021	DRAFT FOR REVIEW
G	16/07/2021	DRAFT FOR REVIEW
F	02/07/2021	DRAFT FOR COORDINATION
E	22/06/2021	DRAFT FOR REVIEW
D	11/06/2021	DRAFT 70% TENDER DOCS

sydney Level 2, 79 Myrtle St
 Chippendale 2008
 Nominated Architect: Gerard Reinmuth 6629
 T 02 9698 2198
 F 02 9698 2353
 hobart 181 Elizabeth St
 Hobart 7000
 Nominated Architect: Scott Balmforth 564
 T 03 6234 6372
 F 03 6231 4839

TERROIR

Project:
**ROYAL GEELONG YACHT CLUB
 GEELONG WATERFRONT SAFE
 HARBOUR PRECINCT - STAGE 1**

Drawing Description:
LEVEL 2 FLOOR PLAN STAGE 1

Drawn by: JA Checked by: SB Scale: 1 : 100@A1

PROJECT NO:	DWG NO:	REV NO:
18330	TD-11-03	H

Drawing Status: TENDER DOCUMENTATION

1
 40-01
LEVEL 2 FLOOR PLAN
 1 : 100

GENERAL NOTES

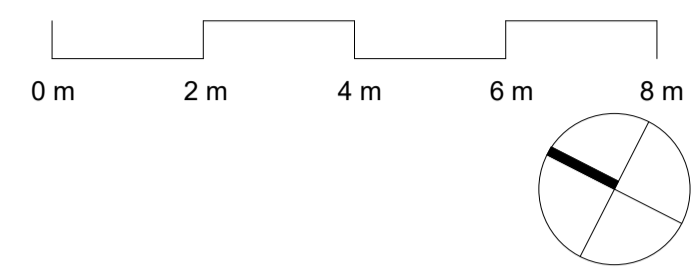
DO NOT SCALE FROM THIS DRAWING

CONFIRM ALL DIMENSIONS AND SETOUTS ON SITE PRIOR TO MANUFACTURE & INSTALLATION

ALL WORK IN ACCORDANCE WITH RELEVANT AUSTRALIAN STANDARDS

TO BE READ IN CONJUNCTION WITH ENGINEERS DOCUMENTS.

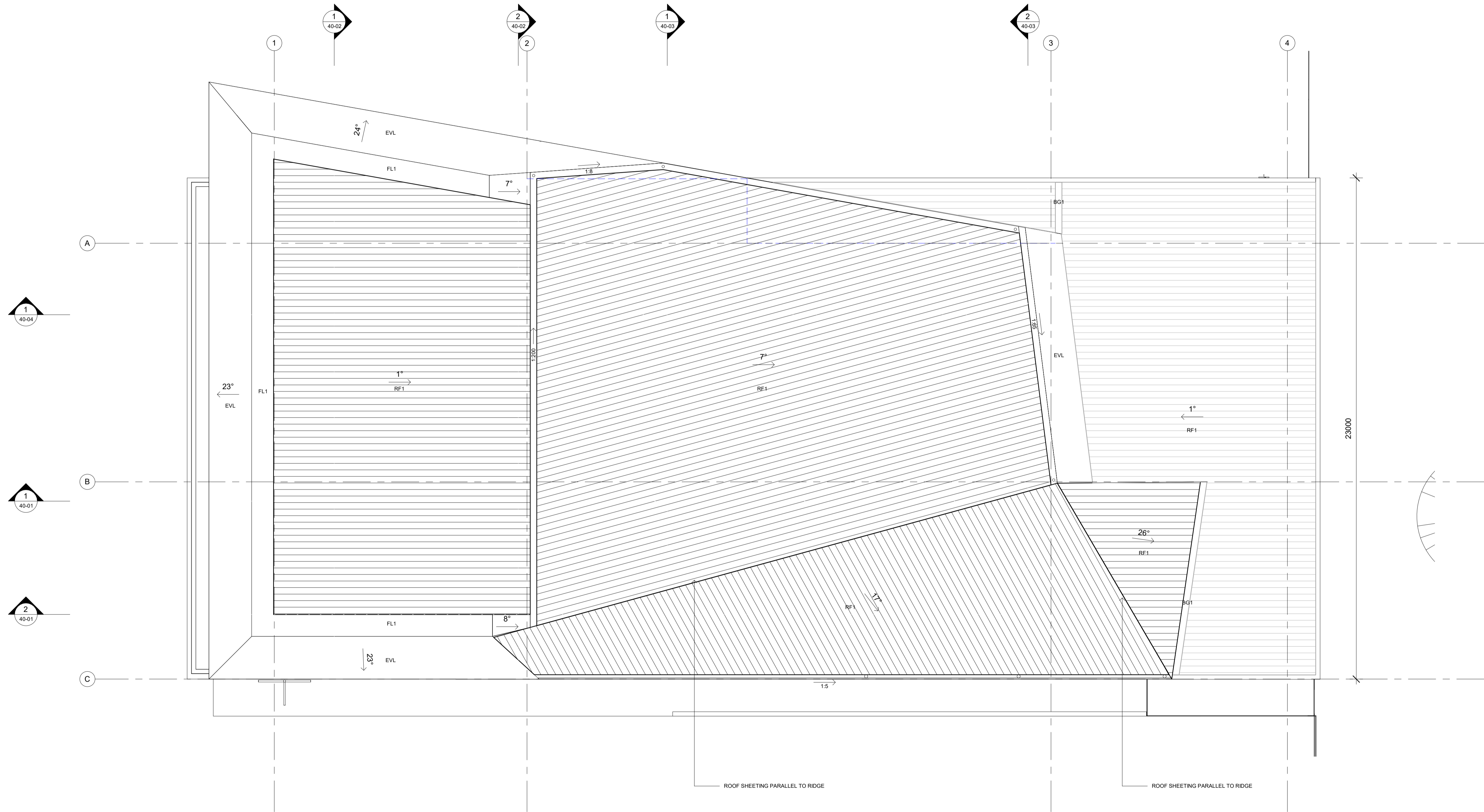
LEGEND



LEGEND

Refer to SCH-01 and SCH-02 for full descriptions and specification of all elements.

CODE	DESCRIPTION
BG1	Box gutter
EVL	Sheet metal eaves lining (profile TBC), to match RF1
FL1	Folded metal flashing
RF1	Metal roof sheeting, Lysaght Kliplok, Colorbond Cosmic



Rev	Date	Description
G	21/07/2021	DRAFT FOR REVIEW
F	09/07/2021	DRAFT FOR COORDINATION
E	08/07/2021	DRAFT FOR COORDINATION
D	02/07/2021	DRAFT FOR COORDINATION
C	29/06/2021	DRAFT FOR REVIEW

sydney Level 2, 79 Myrtle St
Chippendale 2008
Nominated Architect: Gerard Reinmuth 6629
T 02 9698 2198
F 02 9698 2353
hobart 181 Elizabeth St
Hobart 7000
Nominated Architect: Scott Balmforth 564
T 03 6234 6372
F 03 6231 4839

TERROIR

Project:
**ROYAL GEELONG YACHT CLUB
GEELONG WATERFRONT SAFE
HARBOUR PRECINCT - STAGE 1**
Drawing Description:
ROOF PLAN STAGE 1

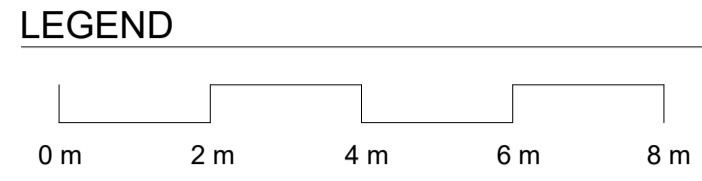
Drawn by: JA Checked by: SB Scale: 1 : 100@A1

PROJECT NO:	DWG NO:	REV NO:
18330	TD-30-01	G

Drawing Status: TENDER DOCUMENTATION

1 ROOF PLAN
40-01 1:100

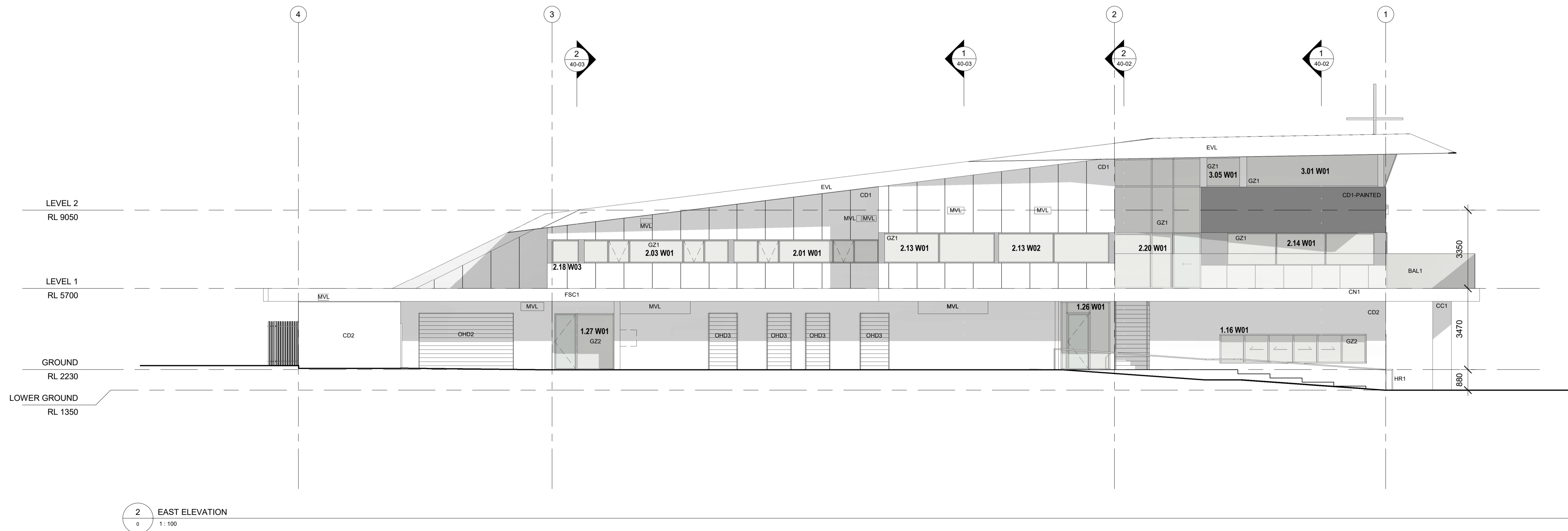
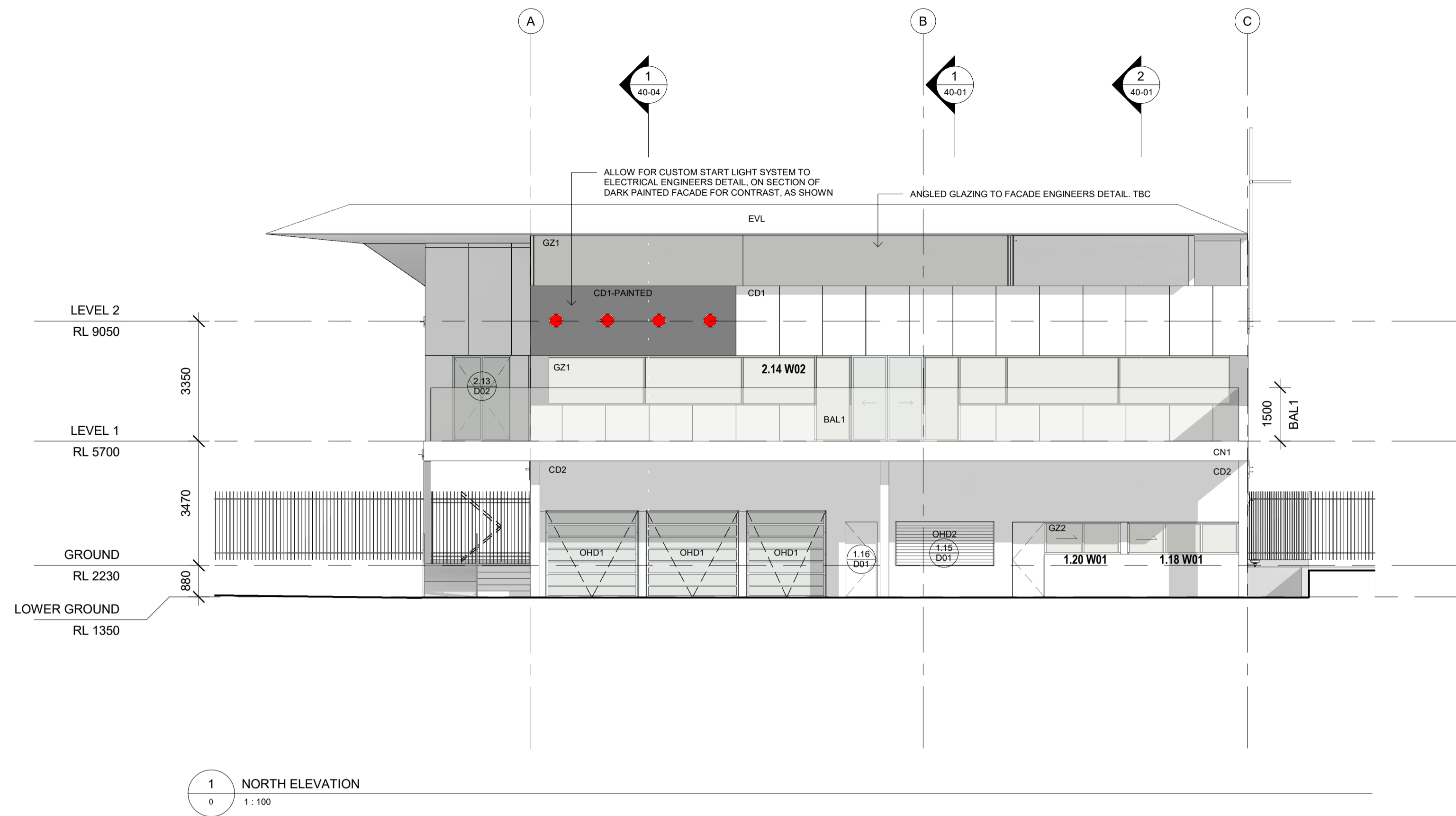
GENERAL NOTES
 DO NOT SCALE FROM THIS DRAWING
 CONFIRM ALL DIMENSIONS AND SETOUTS ON SITE PRIOR TO MANUFACTURE & INSTALLATION
 ALL WORK IN ACCORDANCE WITH RELEVANT AUSTRALIAN STANDARDS
 TO BE READ IN CONJUNCTION WITH ENGINEERS DOCUMENTS.



LEGEND

Refer to SCH-01 and SCH-02 for full descriptions and specification of all elements.

CODE	DESCRIPTION
BAL1	Glass balustrade
CC1	Concrete column with clear matt protective coating
CD1	CSR Barenstone expresswall panel - fibre cement cladding, Original
CD2	CSR commercial express panel - fibre cement cladding, Painted - Deep ocean
CN1	Insitu concrete with clear matt protective coating
EVL	Sheet metal eaves lining (profile TBC), to match RF1
FSC1	Metal fascia, Colorbond Cosmic
GZ1	External transparent double glazing, Frame colour PC1
GZ2	External transparent double glazing, Frame colour PC2
HR1	Galvanised iron Handrail
MVL	Mechanical Ventilation Louvre
OHD1	Sectional overhead garage door, glazed
OHD2	Roller shutter, Manually operated, Deep Ocean
OHD3	Mini Roller shutter, Manually operated, Deep Ocean



Rev	Date	Description
G	21/07/2021	DRAFT FOR REVIEW
F	02/07/2021	DRAFT FOR COORDINATION
E	29/06/2021	DRAFT FOR REVIEW
D	22/06/2021	DRAFT FOR REVIEW
C	11/06/2021	DRAFT 70% TENDER DOCS

sydney	Level 2, 79 Myrtle St Chippendale 2008 Nominated Architect: Gerard Reinmuth 6629 T 02 9698 2198 F 02 9698 2353
hobart	181 Elizabeth St Hobart 7000 Nominated Architect: Scott Balmforth 564 T 03 6234 6372 F 03 6231 4839

TERROIR

Project:
**ROYAL GEELONG YACHT CLUB
 GEELONG WATERFRONT SAFE
 HARBOUR PRECINCT - STAGE 1**

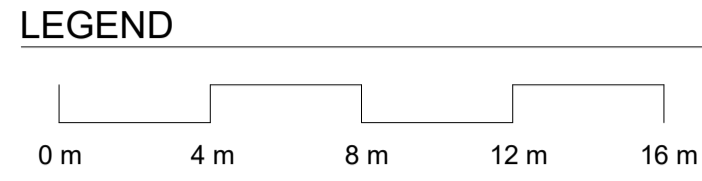
Drawing Description:
ELEVATIONS STAGE 1

Drawn by: JA Checked by: SB Scale: 1 : 100@A1

PROJECT NO:	DWG NO:	REV NO:
18330	TD-50-01	G

Drawing Status: TENDER DOCUMENTATION

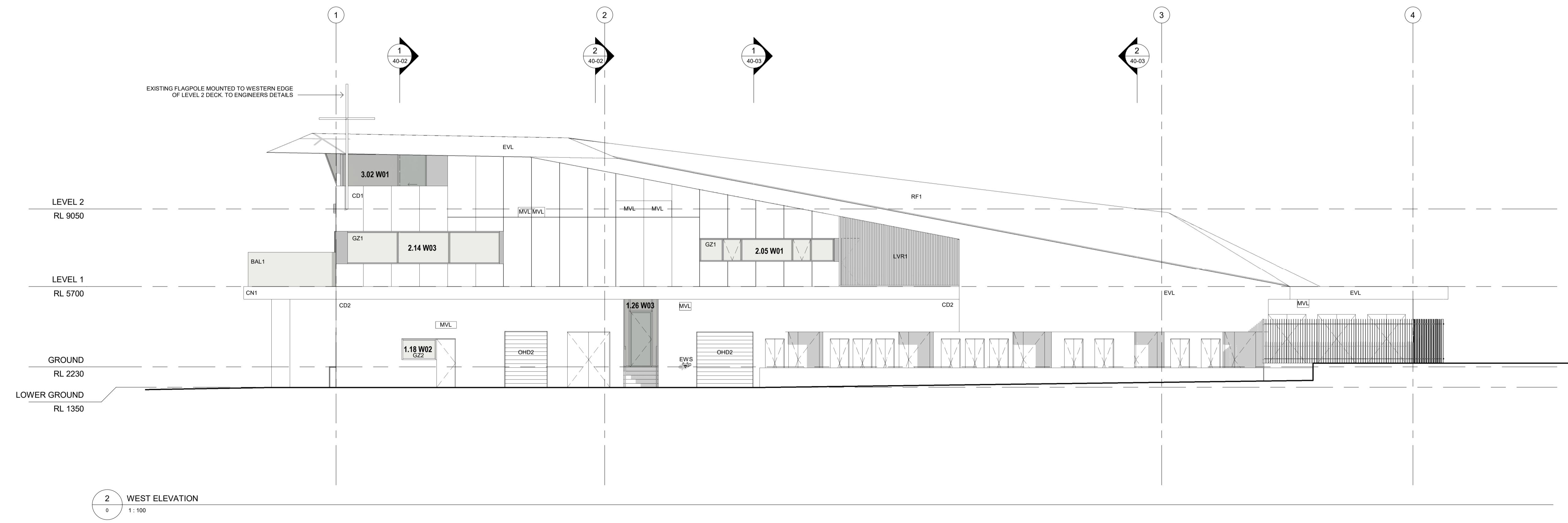
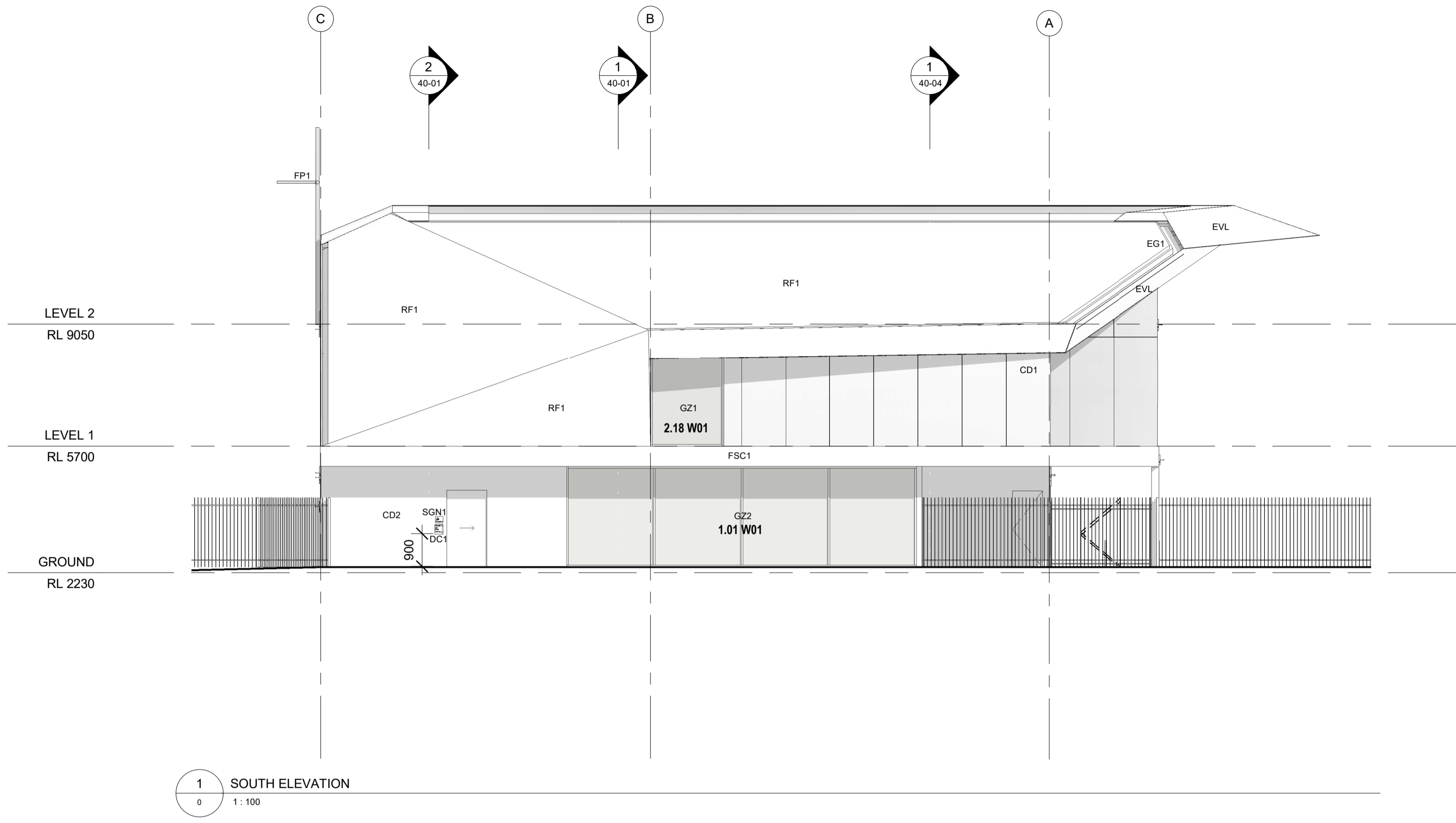
GENERAL NOTES
 DO NOT SCALE FROM THIS DRAWING
 CONFIRM ALL DIMENSIONS AND SETOUTS ON SITE PRIOR TO MANUFACTURE & INSTALLATION
 ALL WORK IN ACCORDANCE WITH RELEVANT AUSTRALIAN STANDARDS
 TO BE READ IN CONJUNCTION WITH ENGINEERS DOCUMENTS.



LEGEND

Refer to SCH-01 and SCH-02 for full descriptions and specification of all elements.

CODE	DESCRIPTION
BAL1	Glass balustrade
CD1	CSR Danestone expresswall panel - fibre cement cladding, Original
CD2	CSR commercial express panel - fibre cement cladding, Painted - Deep Ocean
CN1	Insitu concrete with clear matt protective coating
DC1	Changing Places Door Control (internal)
EG1	Concealed eaves gutter
EVL	Sheet metal eaves lining (profile TBC), to match RF1
EWS	Eye Wash Station, plumbed to mains
FP1	Metal fascia, Colorbond Cosmic
FSC1	Metal fascia, Colorbond Cosmic
GZ1	External transparent double glazing, Frame colour PC1
GZ2	External transparent double glazing, Frame colour PC2
LVR1	Acoustic and weather-proof aluminium louvers
MVL	Mechanical Ventilation Louvre
OHD2	Roller shutter, Manually operated, Deep Ocean
RF1	Metal roof sheeting, Lysaght Kiplok, Colorbond Cosmic
SGN1	Changing Places toilet & Shower Sign



Rev	Date	Description
E	21/07/2021	DRAFT FOR REVIEW
D	02/07/2021	DRAFT FOR COORDINATION
C	29/06/2021	DRAFT FOR REVIEW
B	11/06/2021	DRAFT 70% TENDER DOCS
A	28/05/2021	DRAFT 70% TENDER DOCS

sydney Level 2, 79 Myrtle St
 Chippendale 2008
 Nominated Architect: Gerard Reinmuth 6629
 T 02 9698 2198
 F 02 9698 2353

hobart 181 Elizabeth St
 Hobart 7000
 Nominated Architect: Scott Balmforth 564
 T 03 6234 6372
 F 03 6231 4899

TERROIR

Project:
**ROYAL GEELONG YACHT CLUB
 GEELONG WATERFRONT SAFE
 HARBOUR PRECINCT - STAGE 1**

Drawing Description:
ELEVATIONS STAGE 1

Drawn by: JA Checked by: SB Scale: 1 : 100@A1

PROJECT NO:	DWG NO:	REV NO:
18330	TD-50-02	E

Drawing Status: TENDER DOCUMENTATION