



Rex Gorell Ford

Etchells

SAILING INSTRUCTIONS

**The Rex Gorell Ford International Etchells
Victorian Championship 2022**

11th to 14th March 2022

To be conducted by

**Royal Geelong Yacht Club
Geelong, Victoria**

In conjunction with the Geelong Etchells Fleet



[DP] denotes a rule for which the penalty is at the discretion of the Protest Committee.

[NP] denotes that a breach of this rule will not be grounds for a protest by a boat. This changes RRS 60.1(a).

[SP] denotes a rule for which a standard penalty may be applied by the race committee without a Hearing.

1. RULES

- 1.1 The regatta will be governed by the 'rules' as defined in the Racing Rules of Sailing (RRS).
- 1.2 The prescriptions of Australian Sailing will apply.
- 1.3 The rules of the International Etchells Class Association will apply except as modified by these Sailing Instructions.
- 1.4 The Championship is sanctioned by the International Etchells Class as a Class C event. All competitors shall meet the eligibility requirements of the International Etchells Class and shall comply with the World Sailing Eligibility Code, Regulation 19.
- 1.5 In accordance with WS Regulation 20.5.1, no advertising shall be displayed pursuant to WS Regulation 20.3.2. The Organising Authority may require all participating boats to display the event sponsor's advertising in accordance with WS Regulation 20.4.1.
- 1.6 If there is a conflict between languages, the English text will take precedence.
- 1.7 If there is a conflict between rules or regulations, other than RRS, the Sailing Instructions will prevail. This alters RRS 63.7.
- 1.8 RRS Appendix T – Arbitration will apply.

2. CHANGES TO SAILING INSTRUCTIONS

- 2.1 Any change to the sailing instructions will be posted before 09:00 hours on the day it will take effect, except that any change to the schedule of races will be posted by 20:00 hours on the day before it will take effect.

3. COMMUNICATIONS WITH COMPETITORS

- 3.1 Notices to competitors will be posted on the Official Notice Board located next to the RGYC Slipway & Mast crane.
- 3.2 On the water, the race committee intends to monitor and communicate with competitors on VHF channel 73.

4. [DP] CODE OF CONDUCT

Competitors and support persons shall comply with reasonable requests from race officials

5. SIGNALS MADE ASHORE

- 5.1 Signals made ashore will be displayed at the flag mast located on the western boundary of the club.
- 5.2 When flag AP is displayed ashore, '1 minute' is replaced with 'not less than 60 minutes' in Race Signal AP.

6. SCHEDULE OF RACES

Day	Event	Time
Friday, 11th March 2022	Registration and Weigh In	16:00 – 18:30 hrs
Saturday, 12th March 2022	Registration and Weigh In	08:30 – 10:00 hrs
Saturday, 12th March 2022	Competitor Briefing	10:30 hrs
Saturday, 12th March 2022	Racing	1 st Warning 12:55 hrs
Sunday, 13th March 2022	Racing	1 st Warning 12:55 hrs
Monday, 14th March 2022	Racing	1 st Warning 10:55 hrs
Monday, 14th March 2022	Presentation Ceremony	After Racing

6.1 Two races are scheduled each day.

6.2 A maximum of six (6) races will be conducted for the series.

6.3 One extra race may be sailed, provided that the class does not become more than one race ahead of schedule and the change is made in accordance to SI 2.1

6.4 When more than one race will be held on the same day, the warning signal for each succeeding race will be made as soon as practicable. To alert boats that a race will begin soon, the orange starting line flag will be displayed with one sound at least 5 minutes before the warning signal is made.

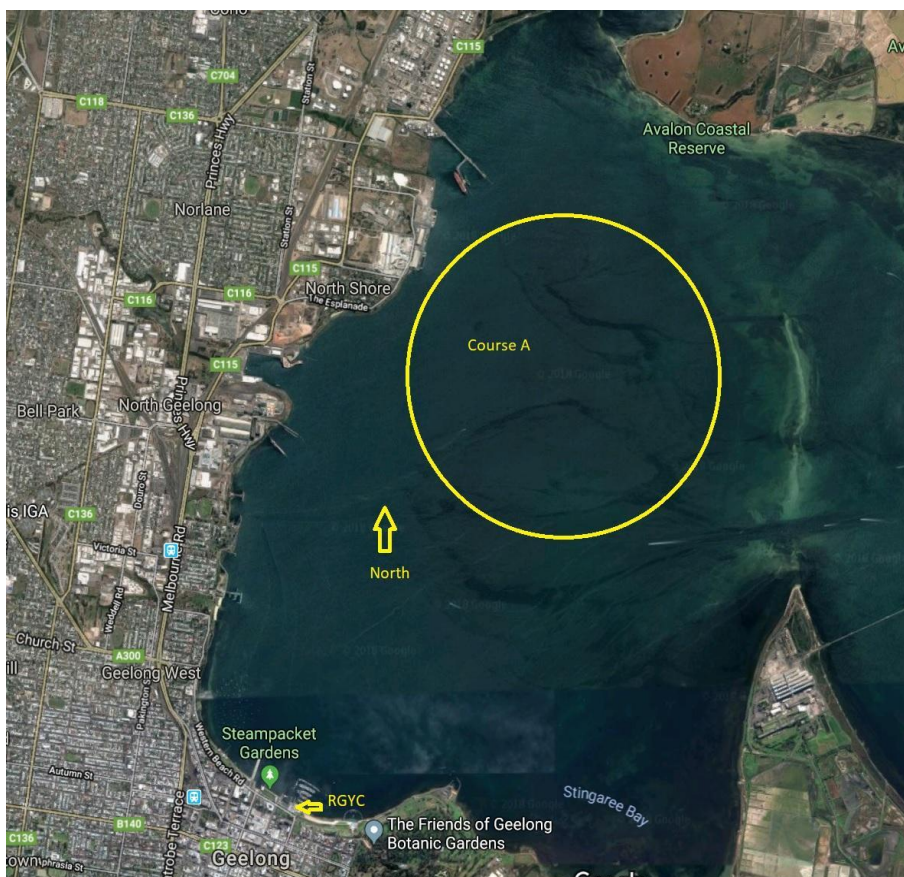
6.5 No Warning Signal will be made after 15:00hrs on the last scheduled day of racing

7. CLASS FLAG

7.1 The class flag will be the Etchells Class insignia on a white background.

8. RACING AREA

8.1 Racing will take place on the waters of Corio Bay per “Course A” below.

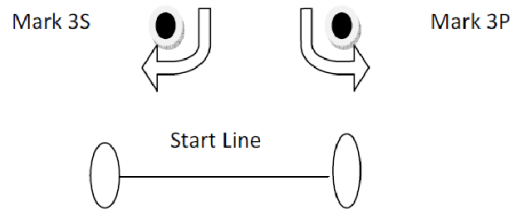
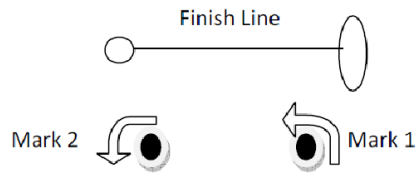


9. THE COURSES

9.1 The diagrams below show the course configuration, including the order in which marks are to be passed, and the side on which each mark is to be left.

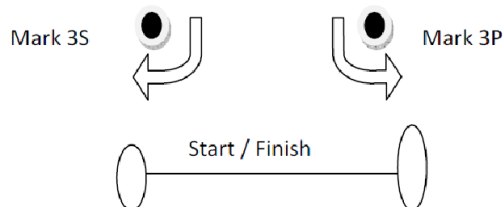
Course 1 – Numeral Pennant 1

Start- 1-2-3(P/S)-1-2-3(P/S)-Finish



Course 2- Numeral Pennant 2

Start-1-2-3(S/P)-1-2-Finish



9.2 The course to be sailed will be designated by displaying Numeral Pennant 1 or 2 from the race committee vessel no later than the warning signal.

9.3 The race committee vessel may display the approximate compass bearing from the Starting Line to Mark 1.

10. MARKS

10.1

Marks are described as follows:

Mark	Shape	Colour
Start Mark	Race Committee Vessels	Orange Flag
Start Pin	Race Committee Vessels	Orange Flag
Finish Mark	Race Committee Vessel	Blue Flag
Finish Pin	Race Committee Vessel	Blue Flag
Mark 1	Cylinder	Orange
Mark 2	Cone	Yellow
Marks 3S & 3P	Cone	Orange
Change Mark 1	Cylinder	Orange with Black Band
Change Marks 3S & 3P	Cylinder	Orange with Black Band
Alternate Start Mark	Cube	Yellow & White
Alternate Finish Mark	Cone	Black

10.2 A gate may be replaced by a single mark to be left to port.

11. THE START

11.1 Races will be started using RRS 26.

11.2 The Starting Line will be between the staffs displaying an orange flag on the race committee vessels at each end of the starting line or between the staff displaying an orange flag on the race committee vessel at the starboard end of the starting line and a yellow & white cube buoy at the port end.

11.3 A boat starting later than 10 minutes after the starting signal will be scored DNS. This changes RRS 63.1, A5.1 and A.5.2

11.4 The Race Committee will attempt to notify OCS, UFD and BFD boats by bow number or sail number by radio on VHF Channel 73 approximately one minute after the starting signal. Failure of equipment, failure to hear a hail, delay in hailing or the order in which hails are given will not be grounds for redress.

12. CHANGE OF THE NEXT LEG OF THE COURSE

12.1 To change the next leg of the course, the Race Committee will lay a new mark (or move the finishing line) and remove the original mark as soon as practicable. When in a subsequent change a new mark is replaced, it will be replaced by an original mark.

13. THE FINISH

13.1 The finishing line will be between staffs displaying a blue flag on the race committee vessels at each end of the line or between the staff displaying a blue flag on a race committee vessel and a black cone buoy.

14. PENALTY SYSTEM

- 14.1 The penalty for breaking a rule of Part 2 shall be a One Turn Penalty (one tack and one gybe in the same direction) except that for infringements occurring within the Zone as defined in the current RRS the penalty shall be a Two Turns Penalty (two tacks and two gybes in the same direction). This changes RRS 44.1
- 14.2 **[NP]** A boat that has taken a penalty or retired under RRS 44.1 shall complete an acknowledgement form at the race office within the protest time limit.

15. TIME LIMITS

- 15.1 The time limit for Course 1 will be 2.5 hours from the starting signal or for Course 2 it will be 2 hours from the starting signal. If one boat finishes within the time limit, then the race will stand.
- 15.2 If no boat has passed the first windward mark one hour after the starting signal, the race shall be abandoned.
- 15.3 Boats failing to finish within 30 minutes after the first boat sails the course and finishes will be scored Did Not Finish. This changes RRS 35, and A.5.1

16. PROTESTS AND REQUESTS FOR REDRESS

- 16.1 Protest forms are available at the RGYC main bar. Protests shall be delivered to the race office within 60 minutes of the last boat to finish the last race of the day. This time will be posted on the Official Notice Board. This changes RRS 61.3 and 62.2.
- 16.2 Notices will be posted within 30 minutes of the protest time limit to inform competitors of hearings in which they are parties or named as witnesses. Hearings will be held at the club.
- 16.3 Notices of protests by the Race Committee will be posted within the protest time limit on the Official Notice Board to inform boats under RRS 61.1(b).
- 16.4 Prior to a hearing and with the permission of the Protest Committee, a boat that has broken a rule of Part 2 of the RRS and has not complied with the requirements of RRS 31 or 44.1, may accept a 40% place penalty, calculated on the number of boats entered rounded to the nearest whole number (rounding 0.5 upwards), except that she shall not be scored worse than DNF.
- 16.5 For infringements of the rules other than Part 2, the Protest Committee may award a lesser penalty than DSQ.
- 16.6 For the purpose of RRS 64.3(b) the 'authority responsible' is the Class Governing Committee.

16.7 On the last day of the regatta:

- (a) a request for reopening a hearing shall be delivered within the protest time limit if the party requesting reopening was informed of the decision on the previous day;
- (b) a request for reopening a hearing held on the last day shall be delivered no later than 30 minutes after the party requesting reopening was informed of the decision on that day;
- (c) the time limit to request redress based upon an action or omission of the Race Committee or Protest Committee shall be 30 minutes after the final results are posted. This changes RRS 62.2.

17. SCORING

17.1 The Low Point scoring system of RRS Appendix A will apply.

17.2 Three (3) races are required to constitute a series.

17.3 When three (3) races have been completed, a boat's series score will be the total of her race scores.

17.4 When four (4) or more races have been completed, a boat's series score will be the total of her race scores excluding her worst score.

18. [NP] [DP] SAFETY REGULATIONS

18.1 A boat that retires from a race shall notify the Race Committee as soon as possible.

19. [NP] [DP] REPLACEMENT OF CREW OR EQUIPMENT

19.1 Substitution of crew will not be allowed without the prior written approval of the Race Committee.

19.2 After measurement until completion of racing, no boat, sail or any item of measured equipment shall leave the venue without being posted on the Official Equipment Sign-out Sheet on the Official Notice Board. It is the sole responsibility of each skipper to ensure proper recording.

19.3 After measurement until completion of racing, no sail shall be re-cut or altered. Repairs to sails pursuant to all applicable rules are permissible only upon written approval of the Race Committee. All such sails may be subject to re-measurement on completion of repairs.

20. [DP] [NP] EQUIPMENT AND MEASUREMENT CHECKS

20.1 A boat or equipment may be inspected at any time for compliance with the class rules and sailing instructions which may include RRS 43 and Class Rules C.2.2 and C.3.2.

20.2 On the water, a boat can be instructed by the Race Committee to proceed immediately to a designated area for inspection.

21. CREW WEIGHING

- 21.1 The weights and total combined crew weight of each crew including skipper shall be determined prior to racing and the total combined weight of crew members for each boat will be posted on the Official Notice Board.
- 21.2 Crews shall be weighed wearing light clothing, the minimum being outerwear shorts and t-shirt.
- 21.3 Crew substitutions shall not be permitted for the purpose of making the weight limit.
- 21.4 Weighing scales will be available on each race day in the Race Office from 10:00 to 17:00hrs.

22. OFFICIAL VESSELS

- 22.1 Official vessels may display the RGYC Burgee.

23. [DP] [NP] COACH AND SUPPORT BOATS

- 23.1 Coach and support vessels must be registered with the Organising Authority prior to acting as a coach or support vessel and shall be marked with identifying numbers issued by the Organising Authority. Vessels shall display identifying numbers at all times while they are acting as a coach or support vessel.
- 23.2 All registered coach and support vessels will carry on board and operate while on the water a VHF radio capable of transmitting and receiving on VHF Channels 16, 71, 72, 73, 77 and agree to assist the Race Committee if directed to do so.
- 23.3 Competitors shall have no communication with, and boats shall not be tied to, coach or support vessels from the first Warning Signal (or any other time the Organising Authority considers appropriate) of the day until racing has been concluded for the day. Between races, coach and support vessels shall not approach, communicate with or transfer provisions or equipment to or from their supported vessels unless in a medical or emergency requirement threatening the health of the crew or the flotation of the boat and only with the expressed permission of the Race Committee.
- 23.4 Registered coach and support vessels and their personnel shall stay at least 100 metres below the starting line from the time of the Preparatory Signal until five minutes after the start of any race. After this time, coach and support boats may then proceed parallel to the course on the starboard side of the course facing the wind at a distance of at least 100 metres outside areas where boats are racing. Coach and support vessels shall not go above the weather marks or the Course 1 finishing line or below the leeward marks or the Course 2 finishing line at any other time while boats are racing.
- 23.5 Any breach of SI 23.1, 23.2, 23.3 or 23.4 by a coach or support vessel may result in a penalty being applied to any or all boats serviced by that coach or support vessel. The penalty may be disqualification or some other penalty as determined by the Protest Committee.
- 23.6 Coach and support vessels shall, when requested by the Race Committee, tow or assist boats not associated with them. Coach and support vessels will monitor VHF channel 71 and shall follow all instructions from the Race Committee.

24. [DP] [NP] HAUL-OUT RESTRICTIONS

24.1 All boats shall be afloat before 12:00 hours on Saturday 12th March and shall not be hauled out during the regatta except with and according to the terms of prior written permission of the Race Committee. The penalty may be DSQ for any subsequent races.

25. [DP] [NP] PLASTIC POOLS

25.1 Plastic pools or their equivalent shall not be used around competing yachts between the close of registration and the end of the regatta.

26. RADIO COMMUNICATION

26.1 This supplements, but does not change, RRS 2 and 41 for the IECA. All boats shall carry a marine band VHF receiver capable of transmitting and receiving channels 16, 69, 71, 72, 73, & 77. Boats shall use the radio to report retirement from racing and may use the radio to request assistance in an emergency. No other transmissions are permitted by competing yachts during each racing day from the first Warning Signal until the end of the last race of the day.

26.2 The Race Committee may use the radio to advise competitors of race information.

26.3 The use of mobile/cell phones or any device capable of sending and/or receiving external electronic communication and/or connecting to the internet is prohibited after the first Warning Signal (or any other time considered appropriate by the Organising Authority) on each race day until the boat has completed its days racing, except as provided in clause 26.1 or in an emergency threatening the safety of any member of the crew or the flotation of the boat and only with the express permission of the Protest Committee or the Race Committee.

27. PRIZES

27.1 As detailed in the Notice of Race.

28. DISCLAIMER OF LIABILITY

28.1 Competitors participate in the regatta entirely at their own risk. It is the competitor's decision to enter the Championship or to start or continue in any race. Competitors' attention is drawn to RRS Fundamental Rule 3 which states: "The responsibility for a boat's decision to participate in a race or to continue racing is hers alone."

28.2 The Organizing Authority is not responsible for the seaworthiness of a yacht whose entry is accepted or the sufficiency or adequacy of its equipment. The Organizing Authority will not accept any liability for material damage or personal injury or death sustained in conjunction with or prior to, during, or after the regatta.

29. INSURANCE

29.1 All Yachts competing are required to carry current Third-Party Property Liability Insurance of not less than AUD\$10,000,000. All insurance cover shall be maintained during the period of racing.



Rex Gorell Ford



We bridge the gap between planning, economics and development

