

ILCA (LASER) RIGGING SHEET

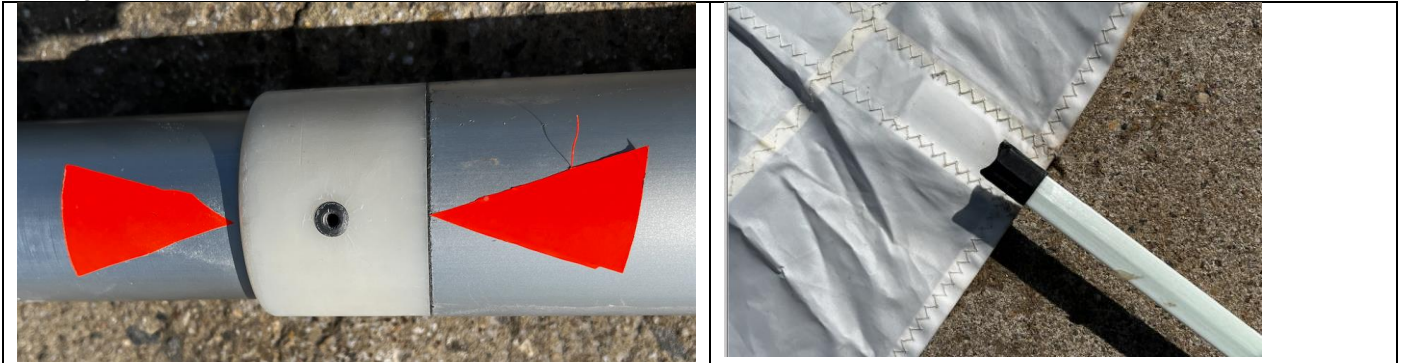
CH Oct 22

PLEASE NOTE: - APART FROM THE SAIL AND LOWER MAST, ALL OF THE FOLLOWING ARE **TO STAY WITH THE BOAT** – FOILS, TILLER+EXTENSION, CONTROL LINES, MAINSHEET, UPPER MAST, BATTENS, COVER, FOIL BAG AND BOOM.

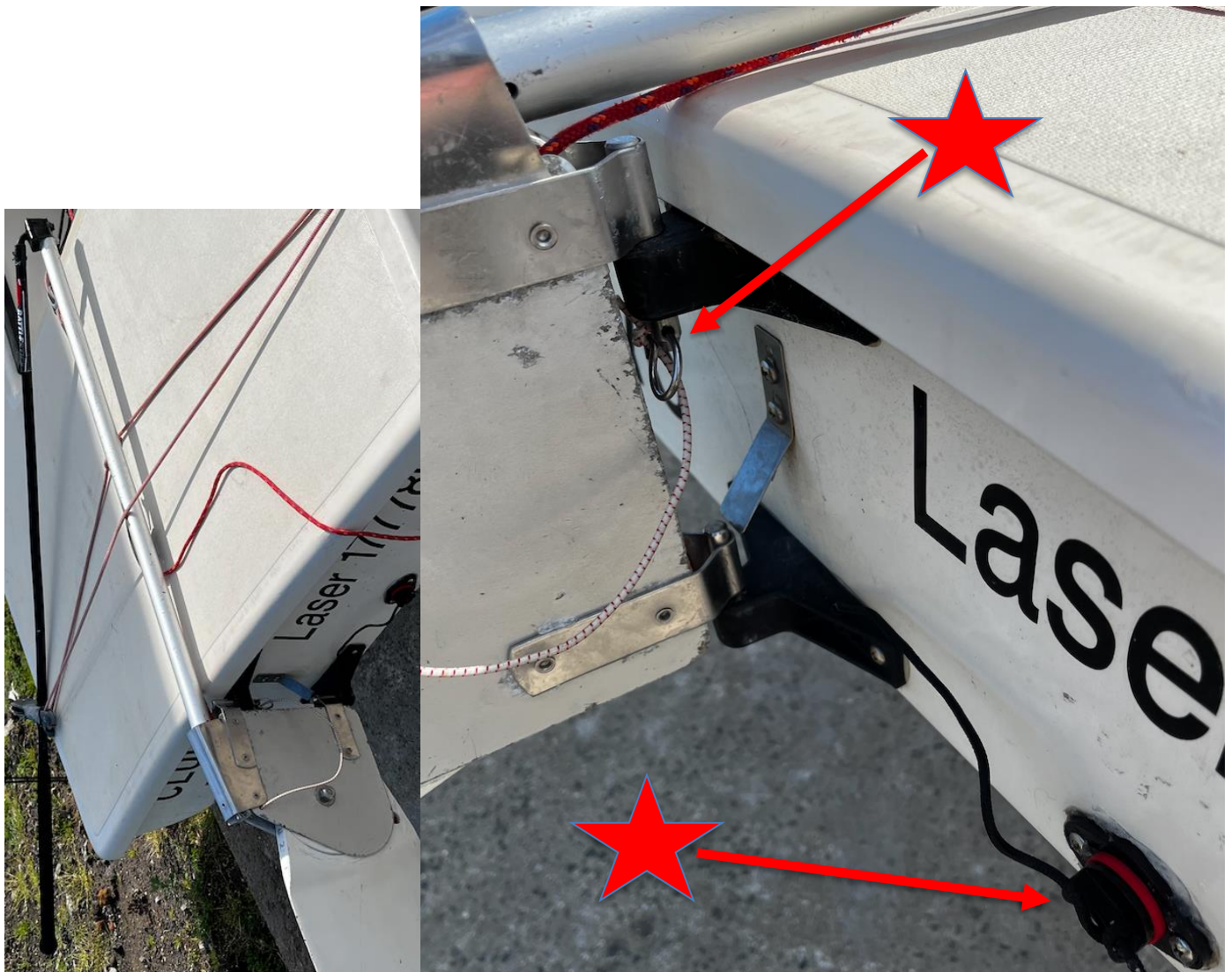
DO NOT UNTIE ANY LINES - the rigging is designed to connect with hooks, pins, loops, or Velcro. **5 MINUTES RIG/UNRIG.**

A Select ILCA7 (Standard), ILCA6 (Radial) or ILCA4 (4.7) Sail and **corresponding LOWER MAST**.

B Fit the upper mast to lower mast and align the sleeve rivet aft (by aligning the orange arrows), fit battens, slide sail on mast and align sail head to gooseneck.



C Fit rudder with tiller **under** the traveler, fit gudgeon R clip and fit transom bung.



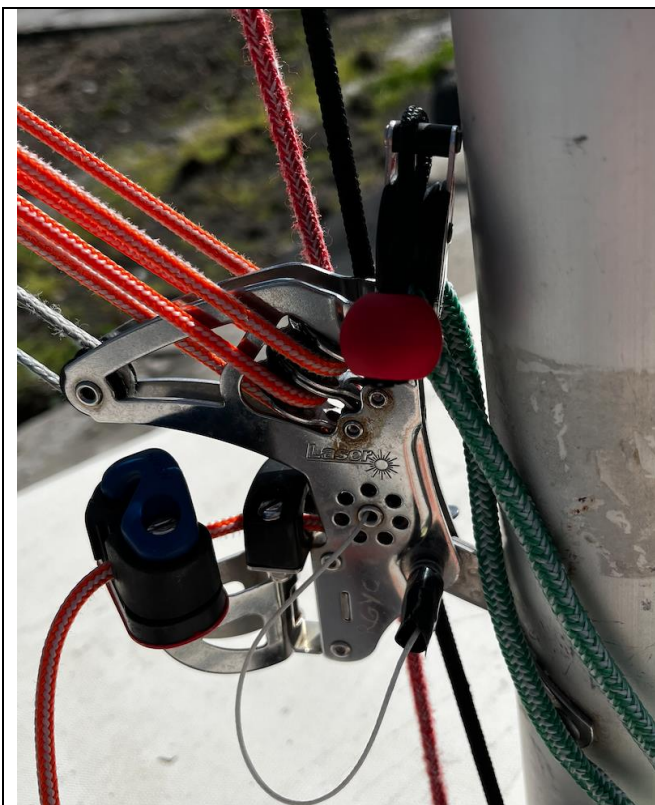
D Step mast and fit the mast retention shock cord to the gooseneck with the small stainless steel hook.



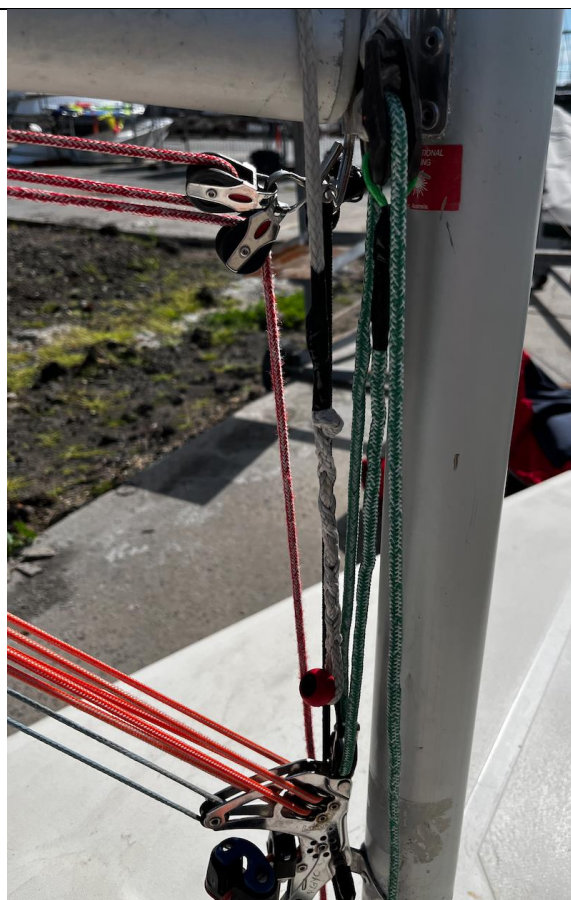
Outhaul Take the grey dyneema line of the outhaul a. thread through the fairlead at the end of the boom, b. through the clew of the sail c. pass the loop over the end of the boom and d. Fasten the clew strap – tight enough for the sail to just touch the boom but not too tight!



F Vang. Attach the vang with the pin and clip to the vang tang on the mast. Press down the boom and attach the vang key to the boom. Tie the tail of the yellow control line to the front corner of the centreboard.



G Cunningham. Insert the light grey dyneema line in the tack eye from starboard to port and bring it down on the starboard side of the gooseneck and place the loop over the red bobble.



H De rig. Wash all components particularly spars and rudder box to reduce corrosion. Return the sail and corresponding lower mast to storage. Report any damage or missing equipment issues using the QR code link.