



*Royal Geelong Yacht Club Inc.  
25 Eastern Beach Rd, Geelong, Vic, 3220*

*2023 International Flying Dutchman National Championship  
2023 International Fireball Victorian Championship  
2023 International Musto Skiff Australian Championship  
Friday 3<sup>rd</sup> to Sunday 5<sup>th</sup> February 2023*

## **SAILING INSTRUCTIONS (SIs)**

**[DP]** – A rule for which the penalty is at the discretion of the jury or protest committee.

### **1. RULES**

- 1.1. The regatta will be governed by the rules as defined in The Racing Rules of Sailing (RRS) and the Australian Sailing (AS) Special Regulations Part 2 for Off The Beach Boats.

### **2. CHANGES TO SAILING INSTRUCTIONS**

- 2.1. Any change to the sailing instructions will be posted before 09:00 on the day it will take effect, except that any change to the schedule of races will be posted by 20:00 on the day before it will take effect.

### **3. COMMUNICATIONS WITH COMPETITORS**

- 3.1. Notices to competitors will be posted on the Official Notice Board located adjacent to the Club slipway.
- 3.2. **[DP]** While racing, except in an emergency, a boat shall not make voice or data transmissions and shall not receive voice or data communication that is not available to all boats.

### **4. CODE OF CONDUCT**

- 4.1. **[DP]** Competitors and support persons shall comply with reasonable requests from race officials.

### **5. SIGNALS MADE ASHORE**

- 5.1. Signals made ashore will be displayed from the OTB flagpole in the vicinity of the boat ramp.
- 5.2. When flag AP is displayed ashore, '1 minute' is replaced with 'not less than 30 minutes' in Race Signals AP.

## 6. SCHEDULE OF RACES

### 6.1. Schedule

Date	Event	Warning time
3rd Feb 2023	Championship Racing - Session 1	13:55
4th Feb 2023	Championship Racing - Session 2	12:55
5th Feb 2023	Championship Racing - Session 3	10:55

6.2. To alert boats that a race or sequence of races will begin soon, the orange starting line flag will be displayed with one sound at least five minutes before the starting signal.

## 7. CLASS FLAGS

7.1. The Class flags are:

Class	Description
Int. Fireball	Square, with a red disc centred on a blue background.
Int. Flying Dutchman	Square with a Blue "FD" on a white background.
Int. Musto Skiff	Square with a Black "MUSTO SKIFF" on a white background.

## 8. RACING AREA

8.1. The racing area is on Corio Bay, adjacent to the Royal Geelong Yacht Club. Attachment "A" shows the location of the racing area.

## 9. COURSES

9.1. The diagrams in Attachment B show the courses, including the approximate angles between legs, the order in which marks are to be passed, and the side on which each mark is to be left.

## 10. MARKS

- 10.1. Marks 1, 2, and 3 are yellow cones.
- 10.2. Mark 1a is a yellow pencil buoy. If Mark 1a is not laid, it is to be ignored.
- 10.3. Mark 1b is an orange cone.
- 10.4. The starting mark is an orange cone or a pin boat displaying an orange staff.
- 10.5. The finishing mark is a black cone.
- 10.6. The new mark as provided in SI 12 is an orange cylinder with a black band.

## 11. THE START

- 11.1. The starting line is between a staff displaying an orange flag on the Race Committee vessel at the starboard end and the course side of the port-end starting mark.
- 11.2. [DP] Boats whose warning signal has not been made shall avoid the starting area during the starting sequence for other races.
- 11.3. A boat that does not start within 5 minutes after her starting signal will be scored Did Not Start without a hearing. This changes RRS A5.1 and A5.2.

## 12. CHANGE OF THE NEXT LEG OF THE COURSE

12.1. To change the next leg of the course, the race committee will lay a new mark (or move the finishing line) and remove the original mark as soon as practicable. When in a subsequent change a new mark is replaced, it will be replaced by an original mark.

## 13. THE FINISH

13.1. The finishing line will be between a staff displaying a blue flag on the Race Committee vessel and the finish mark.

## 14. TIME LIMITS AND TARGET TIMES

14.1. The Race Time Limits (see RRS 35), and the Finishing Windows are shown in the table below.

<b>Class.</b>	<b>Target time.</b>	<b>Time limit.</b>	<b>Finishing window.</b>
Int. Fireball	45 minutes	80 minutes	15 minutes
Int. Flying Dutchman	60 minutes	90 minutes	15 minutes
Int. Musto Skiff	30 minutes	50 minutes	10 minutes

14.2. The Finishing Window is the time for boats to finish after the first boat sails the course and finishes. Boats failing to finish within the Finishing Window, and not subsequently retiring, penalized or given redress, will be scored Time Limit Expired (TLE) without a hearing. A boat scored TLE shall be scored points for the finishing place one more than the points scored by the last boat that finished within the Finishing Window. This changes RRS 35, A5.1, A5.2 and A10.

14.3. Failure to meet the target time will not be grounds for redress. This changes RRS 62.1(a).

## 15. HEARING REQUESTS

15.1. For each class the protest time limit is 60 minutes after the last boat in that class finishes the last race of the day or the race committee signals no more racing today, whichever is later. The time will be posted on the official notice board.

15.2. Hearing request forms are available from the marked box located in the shipping container adjacent to the OTB boat ramp. Completed forms are to be delivered to the Shore Marshall within the appropriate time limit.

15.3. Notices will be posted as soon as practicable to inform competitors of date, time and place of hearings in which they are parties or named as witnesses.

15.4. Notices of protests by the race committee or protest committee will be posted to inform boats under RRS 61.1(b).

## 16. SCORING

16.1. Three races are required to be completed to constitute a series.

16.2. (a) When fewer than five races have been completed, a boats series score will be the total of her race scores.

(b) When five or more races have been completed, a boats series score will be the total of her race scores excluding her worst score.

## 17. SAFETY REGULATIONS

17.1. A Sign-on and Sign-off sheet will be located in the shipping container adjacent to the OTB boat ramp. The skipper (or crew) of each boat shall sign-on by signing this sheet prior to leaving the shore, and sign-off by signing this sheet as soon as possible upon returning to shore at the completion of racing, but no later than the protest time limit.

(a) Failure to "Sign On" prior to racing will result in a 5 point penalty for the first race of the day.

(b) Failure to "Sign Off" within the required time will result in a 5 point penalty for the last race of the day.

(c) The scoring abbreviation SCP (scoring penalty) will be used. The penalty will be applied without a hearing. This changes RRS 63.1

17.2. **[DP]** A boat that retires from a race shall notify the race committee at the first reasonable opportunity. Promptly after returning to shore, the boat shall complete a retirement declaration form, which is available from the marked box located in the shipping container adjacent to the OTB boat ramp. Completed forms are to be delivered to the Shore Marshall.

## 18. REPLACEMENT OF CREW OR EQUIPMENT

- 18.1. **[DP]** Substitution of crew is not allowed without prior written approval of the race committee. The nominated Helm shall not be substituted. These forms will be available from the marked box in the shipping container adjacent to the OTB boat ramp.
- 18.2. **[DP]** Substitution of damaged or lost equipment is not allowed unless authorised by the race committee. Requests for substitution shall be made at the first reasonable opportunity, which may be after the race. These forms will be available from the marked box in the shipping container adjacent to the OTB boat ramp.

## 19. EQUIPMENT AND MEASUREMENT CHECKS

- 19.1. A boat or equipment may be inspected at any time for compliance with the class rules, notice of race and sailing instructions.
- 19.2. **[DP]** When instructed by a race official on the water, a boat shall proceed to a designated area for inspection.

## 20. OFFICIAL VESSELS

- 20.1. Official vessels may be identified by flying an "RGYC Official" flag – blue on white background.

## 21. **[DP]** SUPPORT TEAMS

- 21.1. Team leaders, coaches and other support persons shall stay outside areas where boats are racing from the time of the preparatory signal for the first start until all boats have finished or retired or the race committee signals a postponement, general recall or abandonment.
- 21.2. All support and coach boats shall position themselves at least 100 metres below the start line and beyond the lay-lines of the racecourse whilst racing is in progress, and shall move in such a fashion as to ensure their wake does not affect the boats racing.

## 22. TRASH DISPOSAL

- 22.1. Trash may be placed aboard official or support person vessels.

## 23. BERTHING

- 23.1. Boats shall be kept in their assigned places while in the boat park.

## 24. PRIZES

- 24.1. Prizes will be given for.

### **Fireballs**

1st place IFAV member: Victorian State Champion Perpetual Trophy.

1st place overall.

1st place handicap (Note - Winners of championship trophies are precluded from winning handicap prizes.)

### **Flying Dutchman**

Albert Gold Cup.

Australian Championship Trophy 1<sup>st</sup>, 2<sup>nd</sup> and 3<sup>rd</sup> places.

1<sup>st</sup> Place for each heat.

### **Musto Skiff**

Masters Trophy 1<sup>st</sup> place.

Youth Trophy 1<sup>st</sup> place.

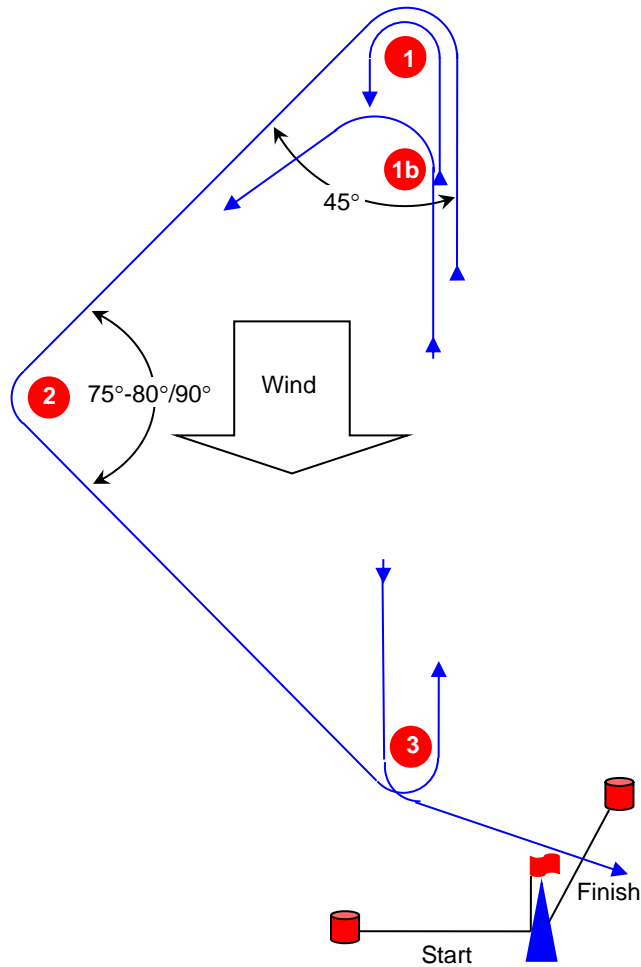
1<sup>st</sup>, 2<sup>nd</sup> and 3<sup>rd</sup> Overall.

**ATTACHMENT A - RACING AREA**



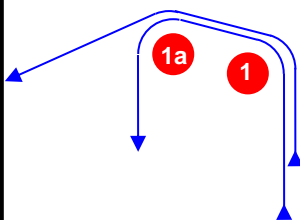
**ATTACHMENT B - COURSE DIAGRAM**

**T**



**Course: Fireball Triangle**

Signal	Mark Rounding Order
<b>TR1</b>	Start - 1b - 2 - 3 - 1b - 3 - Finish



**Course: Flying Dutchman and Musto Skiff**

Signal	Mark Rounding Order
<b>TR2</b>	Start - 1 - 1a - 2 - 3 - 1 - 1a - 3 - Finish (FD)
<b>LR3</b>	Course 3: Start - 1 - 1a - 3 - 1 - 1a - 3 - Finish (Musto)